

September 2011

TEXAS CHAPTER Z2

**GWRRA Region H
MCKINNEY, TEXAS**

**Meeting the fourth Thursday at Fuddruckers,
2045 S. Central Expy. McKinney, Texas
Dinner at 6:30 PM Meeting at 7:00 PM**



Chapter Directors
Rick & Dorinda Maier
Z2link@aol.com

Asst. Chapter Directors
TBA

Chapter Educators
TBA

Secretary Treasurer
Charles & Helen Dunn
1chdunn@sbcglobal.net

Road Captain
Ed & Debbie Neal
edneal77@tx.rr.com

Newsletter Editors
Rich & Vicki Boslow
lonestarz2s@gmail.com

www.lonestar2.org



From the Directors' Chair.....

It was fantastic to open this month's copy of Wing World, and see that Z2 had once again stolen the show in this year's Bike Show at Wing Ding! Congratulations to James and Nancy Smith, and to Charles and Helen Dunn for bringing home the 1st place trophies this year in your class. It is great to know that such a small chapter as Z2 can make such a great showing on the big stage at Wing Ding. (We understand that there is a story that goes along with James and Nancy's trophy – but you will have to ask them about that one.)

From the stories we have heard, it sounds as though Wing Ding was a very pleasant experience.....and it was a blessed escape from the Texas blast furnace. Next year – Wing Ding is going to Fort Wayne, Indiana, and it will certainly be cooler up there in July.

Now that we are starting to get some hints of cooler weather – we have some really great rides on the calendar. We hope that everyone will put these on his/her personal schedule, and plan to get out and ride with us. We always find great places to eat...and have some good rides just getting there.

We certainly wished on several occasions that we had our bike with us in Italy last month. We saw a lot of motorcycles over there – but none that we would trade for “The Wing”. It would be a beautiful place to ride, once you get over the fear that everyone on the road is out to run over you.

The Chapter is in the planning process for our fall community service project. We are looking for great ideas for opportunities to “give back” to our community in some way. If you have any suggestions – please let us know. We will start collecting for this annual event in October.

Now that school has started, and fall is around the corner, it won't be long until the holiday season is upon us. We will be having our annual Christmas party on December 3rd – which is always an event that you don't want to miss. This year, we will be going to Spaghetti Warehouse for our party. Put this on your calendar today – and don't miss it! More details will be forthcoming.

Now is the time to get out and log some miles. The weather has turned cooler, so make time to spend time on a relaxing ride through the country side.

Ride Safe!

Rick & Dorinda

Chapter Talk

The meeting of GWRRA Chapter Lonestar Z2 was called to order by Charles Dunn at 7PM. Our Chapter Directors Rick and Dorinda Maier were on vacation in Italy! Jeff Lattimer, from Ride For Kids, spoke about this organization. It is to raise money for kids with brain tumors—for research. This year's ride is on Sunday, October 2, 2011 at Grapevine Mills in Grapevine, TX. CPR/First Aid class will be held on Saturday, September 24, 2011. Need 10 people to be able to have the class...if not, class will be cancelled. The cost is \$20 per person. Money will be refunded if the class is cancelled. (Ed. Note: The class has been cancelled...money will be returned at meeting in September.) Chapter R's Rally (Convention) is on September 10, 2011. We will meet at Fuddrucker's at 8:30AM, ride to Betty's in Aubrey for breakfast, then on to the rally. The Christmas Party will be on Saturday, December 3, 2011 at Spaghetti Warehouse in Plano at 6PM. Ed Neal, acting Education Director, spoke about pulling a trailer behind one's bike. Here are some tips to help:

1. Be sure all lights are working.
2. Check tire pressure.
3. Check after every 300-400 miles...lights, tire pressure, connections, etc.
4. Carry a can of Fix A Flat and a tire plug with you at all times.
5. 20 lbs of pressure in trailer tires.
6. Don't put heavy stuff on rack on top of trailer, if you have one.
7. Check lug nuts and bearings every 200 miles.
8. 18 lbs. on tongue weight....some suggest 15-20 lbs. depending on the trailer.
9. Adjust load properly.
10. Remember trailer is there! Watch curbs, passing and getting back into lane!
11. Make sure coupler is locked on ball properly.
12. Safety chains to keep trailer off the ground should it come loose. Cross them under the tongue.
13. Don't overload trailer...13 lbs. per cubic feet

Calendar highlights were read and accepted as read. Prizes and 50/50 were awarded. Our visitor, Jeff Lattimer, bought one ticket and won the 50/50. He was kind enough to return the money to the chapter to be donated to the Pediatric Brain Tumor Foundation! The meeting was adjourned at 7:50PM.

An old guy ... (ok, a guy about our age) was working out in the gym when he spotted a sweet young thing.

He asked the trainer that was nearby, "What machine in here should I use, to impress that sweet young thing over there?"

The trainer looked him up and down and said, "I'd try the ATM in the lobby"

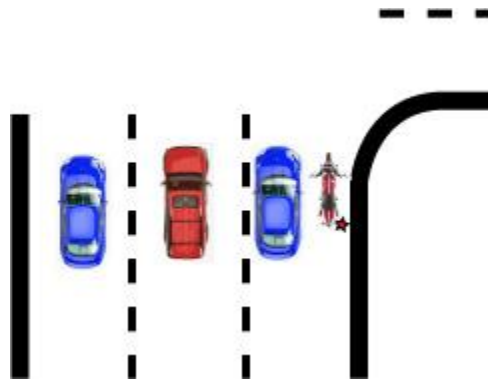
Controlling Your Lane

Two wheels are enough to own a lane

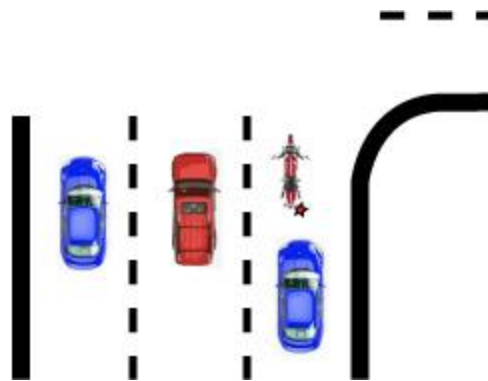
By: James R. Davis

Lane position should be chosen based, among other things, on establishing escape routes, making yourself visible to others, staying out of the blind spots of other vehicles, and road conditions. What is often overlooked, in my opinion, is the concept of 'controlling your lane'.

For example, assume you are riding on surface streets in a city and are stopped at a traffic light preparing to make a right turn. Logic suggests that you should be in the right track of your lane, but it is safer, I suggest, to be closer to the left track.



Why? Because while nearer the left track of your lane you CONTROL the lane. There are people that upon seeing you in the right track with your right turn signal flashing will slide their vehicles into the lane beside you and try to share the lane - to get a jump off the line when the light changes.



That you only have two wheels is of no consequence - you OWN the whole lane that they would try to share with you. If you were to change your mind and elect to not make that right turn, you would be in trouble. Worse, should that sharing vehicle actually decide to make a right turn too, you could easily be forgotten (in his blind spot) and he could drive right over you while making that turn.

Controlling your lane is as important as any other consideration when you choose your lane position.